

# IA-300

## Ion Analyzer

Simple simultaneous  
multiple ion analysis  
for everyone



## Ion analysis made easy and accessible!

### ■ High-sensitivity, high-reliability

Reproducible data obtained by ion chromatography method

### ■ Easy to operate - anyone can use it!

#### Simple operation

Just simply inject samples to obtain measurements. Results are displayed by graphic screen and printed out simultaneously

#### Special knowledge, techniques not required

Chromatograph functions have been integrated into a single unit. Data analysis/calculation are also performed automatically by the analyzer.

#### All reagents required for analyses are available (to be sold separately)

No special equipment required

#### Maintenance mode

Maintenance/troubleshooting by on-screen navigation.

### ■ Multiple ion analysis

Select either a 7 Anions (F, Cl, NO<sub>2</sub>, Br, NO<sub>3</sub>, PO<sub>4</sub>, SO<sub>4</sub>) or 6 Cations (Li, Na, NH<sub>4</sub>, K, Mg, Ca) analysis mode.

### ■ Multi-sample continuous analysis

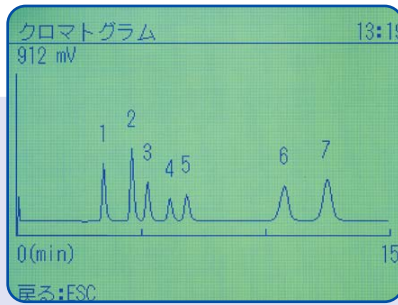
By connecting to the ICA-200AS Auto Sampler (to be sold separately), automated multi-sample analysis is possible.

# Measurement example The analysis results can be displayed and printed out as quantitative values and chromatograms.

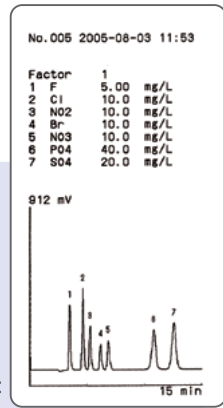
## Anions

測定データ			13:22
No.	005	2005/08/03 11:53	
希釈率	:1		
ピーク	成分名	測定値	換算値
1	F	5.00 mg/L	5.00 mg/L
2	Cl	10.0 mg/L	10.0 mg/L
3	NO <sub>2</sub>	10.0 mg/L	10.0 mg/L
4	Br	10.0 mg/L	10.0 mg/L
5	NO <sub>3</sub>	10.0 mg/L	10.0 mg/L
6	PO <sub>4</sub>	40.0 mg/L	40.0 mg/L
7	SO <sub>4</sub>	20.0 mg/L	20.0 mg/L
選択: ↑ ↓ 加マ: → 戻る: ESC			
変更: ← 印字: ENTER 終了: DATA			

Analysis data display



Chromatogram

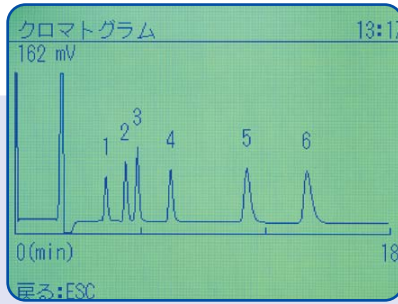


Printout

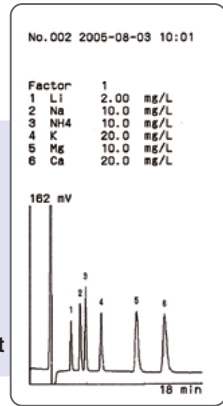
## Cations

測定データ			13:18
No.	006	2005/08/03 12:01	
希釈率	:1		
ピーク	成分名	測定値	換算値
1	Li	2.00 mg/L	2.00 mg/L
2	Na	10.0 mg/L	10.0 mg/L
3	NH <sub>4</sub>	10.0 mg/L	10.0 mg/L
4	K	20.0 mg/L	20.0 mg/L
5	Mg	10.0 mg/L	10.0 mg/L
6	Ca	20.0 mg/L	20.0 mg/L
選択: ↑ ↓ 加マ: → 戻る: ESC			
変更: ← 印字: ENTER 終了: DATA			

Analysis data display



Chromatogram



Printout

## Specifications

Model	IA-300				
Measurement method	Ion chromatography				
Display	Graphic LCD display panel with back-light				
Measurement items	Anions : F, Cl, NO <sub>2</sub> , Br, NO <sub>3</sub> , PO <sub>4</sub> , SO <sub>4</sub> Cations : Li, Na, NH <sub>4</sub> , K, Mg, Ca				
Sample measurements	Loop-cut system 20 μL or 200 μL				
Calibration method	1-point calibration by specific calibration solution				
Measurement modes	Suppresser Anions analysis (using PCI-205 column)		1/2 value Cations analysis (using PCI-322 column)		
Measurement range	Meas. Item	20 μL loop	Meas. item	20 μL loop	200 μL loop
	F		Li	0.05-10.0 mg/L	0.005-1.0 mg/L
	Cl		Na		
	NO <sub>2</sub>	0.050-50.0 mg/L	NH <sub>4</sub>	0.25-50.0 mg/L	0.025-5.0 mg/L
	Br		K	0.5-100.0 mg/L	0.05-10.0 mg/L
	NO <sub>3</sub>		Mg	0.25-50.0 mg/L	0.025-5.0 mg/L
	PO <sub>4</sub>	0.250-100.0 mg/L	Ca	0.5-100.0 mg/L	0.05-10.0 mg/L
SO <sub>4</sub>	0.100-100.0 mg/L				
Measurement time	15 min.		18 min.		
Constant-temperature part	Constant-temperature of column/detection cell unit: 40 ± 4°C				
Detector	Conductivity sensor				
Data processing unit	Built-in (automated calculation)				
Printer	Built-in thermal printer				
Output	Analog : 0 - 1 V Digital : RS-232				
Operating temp. range	10 - 35°C				
Electric power supply	AC 100 V 50/60 Hz				
Main unit dimensions	approx. (W) 190 x (H) 470 x (D) 530 mm				

Note 1: The written analysis modes are examples. Please make inquiries regarding other analysis modes.

Note 2: Conforms to all analysis modes used by earlier ion analyzers.

# DKK-TOA CORPORATION



## CAUTION

Do not operate products before consulting instruction manual.

International Operations:  
DKK-TOA Corporation  
29-10, 1-Chome, Takadanobaba, Shinjuku-ku, Tokyo 169-8648 Japan  
Tel : +81-3-3202-0225 Fax : +81-3-3202-5685